



APERTO FINE ART

NO BOUNDARIES
VISITING ARTISTS JURIED EXHIBITION
SPRING 2024

NO
BOUNDARIES
SPRING 2024
VISITING ARTISTS
JURIED EXHIBITION

April 5-20, 2024

APERTO FINE ART



JURORS' BEST IN SHOW

Anne Leigh, Early Fall, Ledge Falls, 2023, Oil on canvas panel, 12 x 12 inches





Rachael O'Shaughnessy, *Awaken in Blue*, 2020, Oil on canvas over box panel, 36 x 24 inches



Armen Ronov, *Rock-Earth*, 2023, Mixed media on canvas, 15-3/4 x 11-13/16 inches



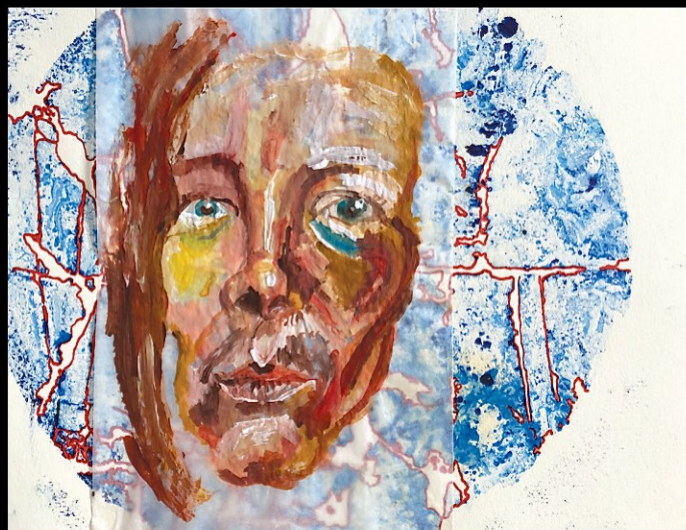
Christopher Gill, Dark Flowers, 2019, Gouache on paper, 27 X 29 inches



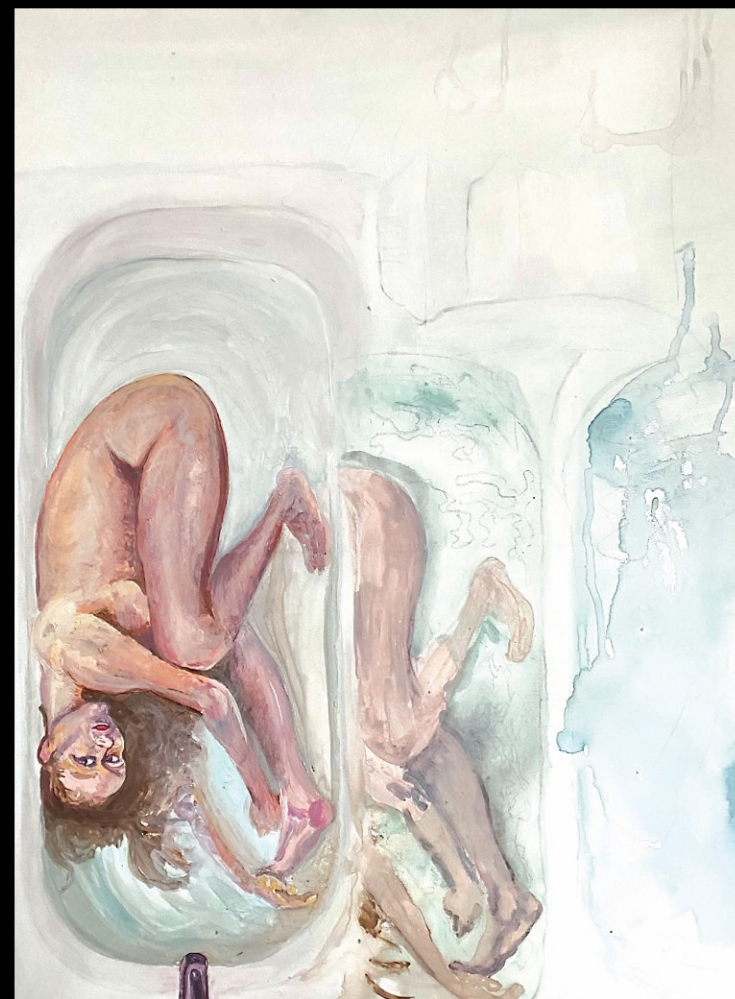
Mary Gardner, Eight Days of Rain, 2023, Oil and modeling clay, 18 x 24 inches



Richard Fishman, 2023 A, 2023, Acrylic paint on archival paper, 28 x 56 inches



Danielle Galietti, Intracranial Pressure, 2022, Acrylic on paper
collaged on ice block relief print, 9-1/2 x 12-1/4 inches



Danielle Galietti, Diplopia, 2022, Acrylic on canvas, 24 x 18 inches



Anne Leigh, *After The Storm Waterfall*, 2024, Oil on canvas panel, 8 x 8 inches



Jane E Goldman, *Audubon April*, 2015, Watercolor, 18 x 26 inches



Lauren Rosenblum, *The Beholder*, 2023, Oil on wooden panel, 30 x 24 inches



Anne Leigh, *Shadow on Waterfall*, 2019, Oil on canvas, 24 x 24 inches



Armen Ronov, Rockfall Phaeton, 2023, Mixed media on canvas, 11-3/16 x 9-29/64 inches



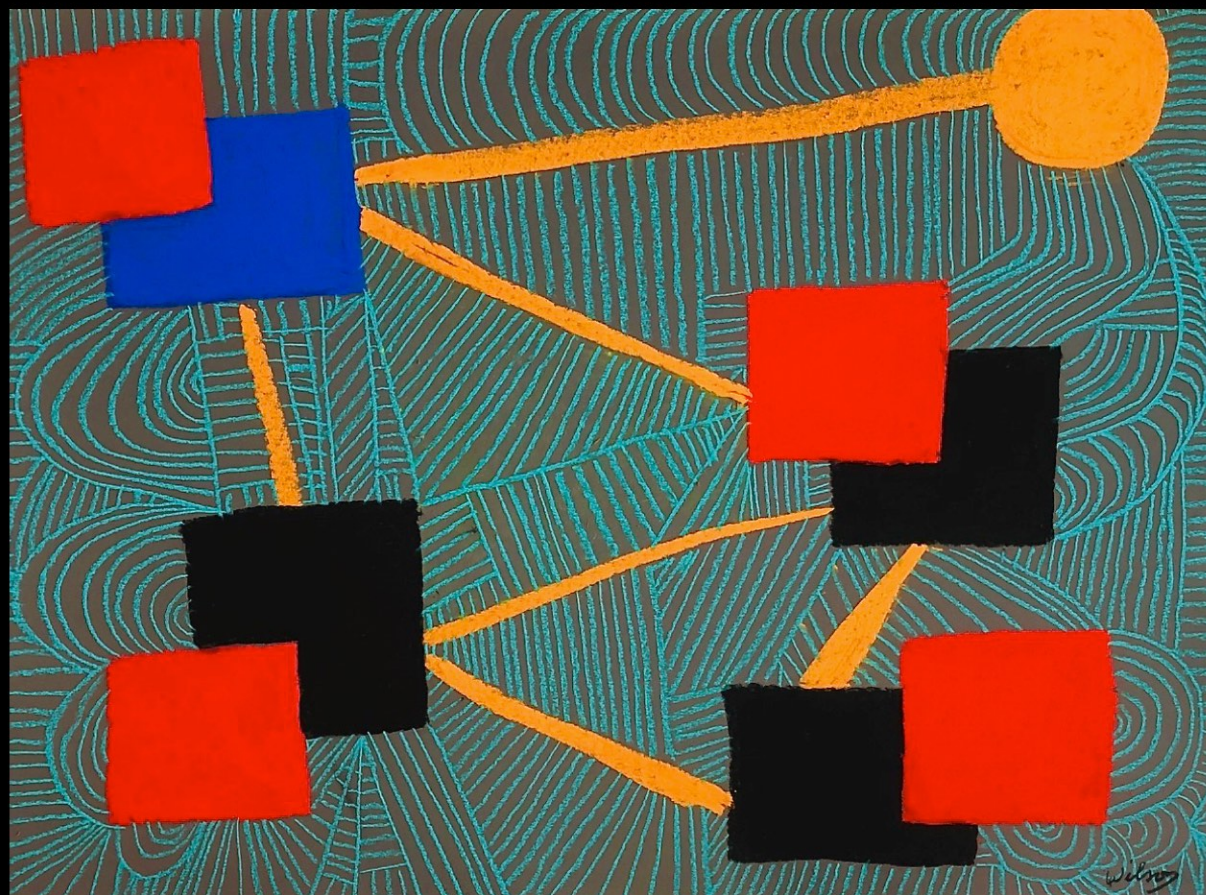
Sharyn Paul Brusie, Bowing Tree At Thunder Hole, 2024, Acrylic, 24 x 24 inches



Lauren Rosenblum, *If You Take My Trees, Who Will Whisper My Name?*, 2023, Oil on wooden panel, 36 x 24 inches



Sharyn Paul Brusie, *Last Sardine At Sand Beach*, 2023, Acrylic and oil, 24 x 30 inches



Timothy Crawford Wilson, Crossroads, 2023, Pastel on paper, 22 x 30 inches

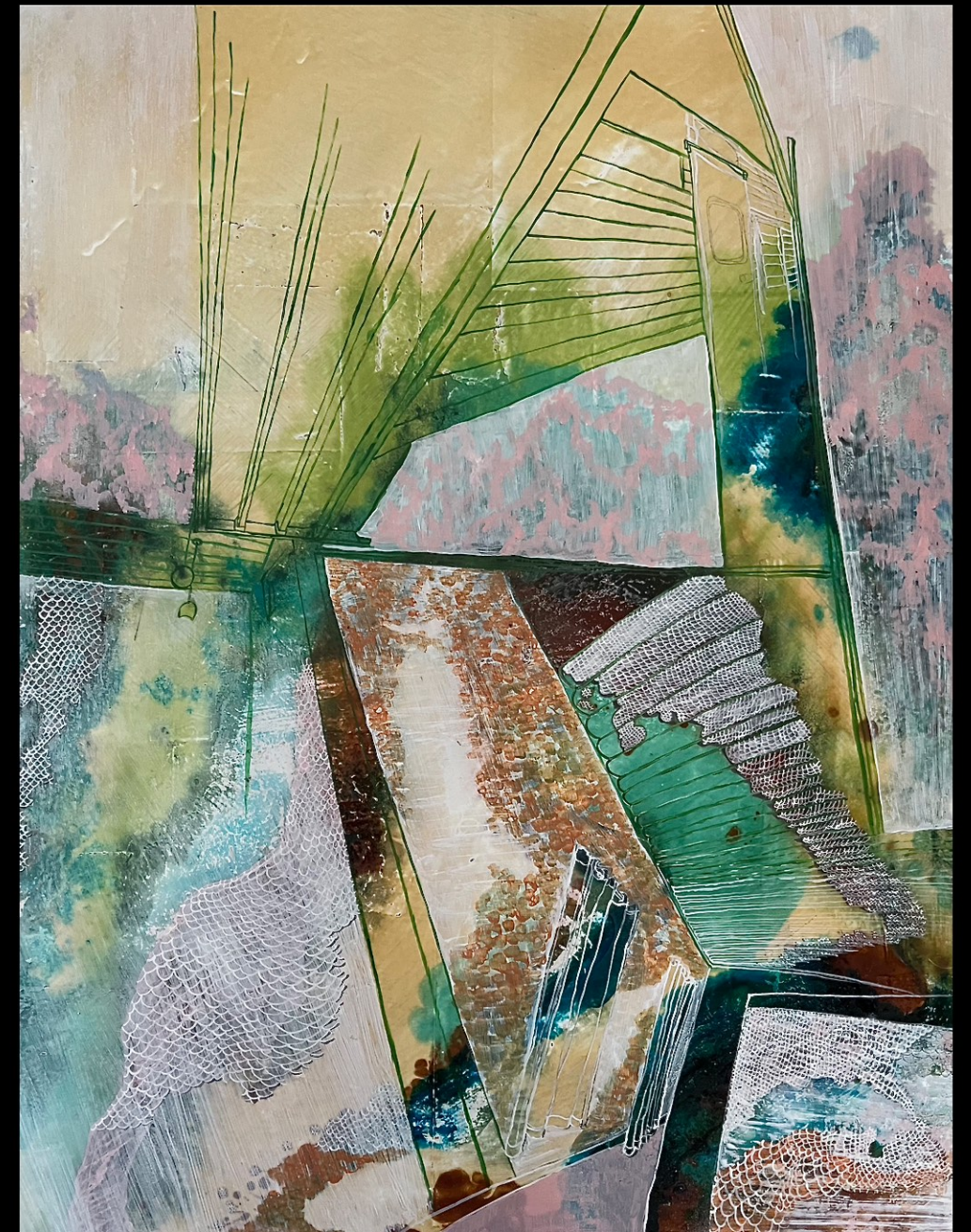


William Janelle, Night Hawk, April 2015, White walnut,
15-1/2 x 8-1/2 x 7 inches



Sara Crall, Shorn, 2023, Multimedia on panel, 40 x 30 inches

Sara Crall, Drift, 2023, Multi Media on panel, 40 x 30 inches





Lauren Rosenblum, *Burgeoning*, 2023, Oil on wooden panel, 30 x 40 inches



Steven Brooks, *Barn Fish*, 2012, Reclaimed wood, found objects, 41 inches (wide)

Front Cover

BEST IN SHOW Anne Leigh, Early Fall, Ledge Falls, 2023
Oil on canvas panel, 12 x 12 inches

Back Cover (detail)

Christopher Gill, Dark Flowers, 2019, Gouache
on paper, 27 X 29 inches

Aperto Fine Art

63 Main Street

Bridgton, Maine 04009

www.apertofineart.com

thegallery@apertofineart.com

(207) 291-4245

© 2024 Aperto Fine Art, LLC.

All Rights Reserved.



