

CHRIS POLSON
HARRISON RIDGE SERIES
FINE ART ARCHIVAL REPRODUCTION PRINTS
APERTO FINE ART

APERTO FINE ART
CHRIS POLSON
HARRISON RIDGE SERIES
FINE ART ARCHIVAL REPRODUCTION PRINTS



HARRISON RIDGE SERIES

THE PRINTS

These fine art archival prints of Maine artist Chris Polson's oil paintings grace the walls of Harrison Ridge, a 55 plus smart growth affordable housing project by Developer's Collaborative out of Portland, ME. The images are of the Maine woods, streams, lakes, mountains, forests and fields, reflecting the building's natural surroundings and broad views. The project was conceived as a means to bring fine art to the residents, fine art that in its original form was not in the project budget. Undeterred and with the artist's blessing, these exquisite reproductions made the installation possible.

THE ARTIST

"In embracing the expressive landscape, Polson has invented his own painterly visual shorthand that mediates between emotion and nature. [E]xpressionism relies on the arbitrary use of color and distorted or multiple perspectives as expressive tools. Since emotions are highly personal, artists continually adapt these tools to a deeply individual, almost solipsistic, purpose, which is to transcribe their "felt" response to nature to canvas... [T]he most important precedent for Polson is Marsden Hartley. Calling himself "the painter of Maine," Hartley painted what would become one of the archetypal modernist approaches to the expressive landscape in the same territory that Polson has revisited yet again. [Polson succeeds] through the use of complex compositions that use multiple perspectives compressed into a poetic space that defies traditional representation... [His] lyrical paintings [are] a celebration of nature through the lens of emotion. That is what the expressive landscape is all about. Enjoy the journey." *

RECOGNITIONS

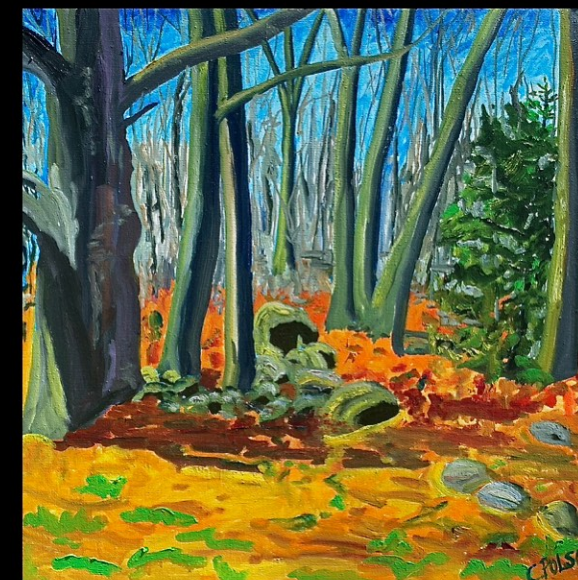
These fine art reproductions of the original oil paintings were exquisitely crafted by master printers Hunter Editions, Kennebunk, ME. This first edition of three is framed in beautiful black ash by Greenhut, Portland, ME. Transportation for the project was provided by Eastern Art Services, Scarborough, ME. Aperto is so appreciative of this team and sends them many thanks.

** David Houston is the Executive Director of the Ohr O'Keefe Museum of Art in Biloxi, MS with a long and storied career as a curator, art historian, professor and author. The Ohr O'Keefe Museum of Art website, <https://georgeohr.org/new-executive-director-selected-for-ohr-okeefe-museum-of-art/>, retrieved October 6, 2023.*





THE PAIRINGS
FIRST FLOOR SET



THE PAIRINGS
SECOND FLOOR SET



THE PAIRINGS

THIRD FLOOR SET

Bog Edge at Noon
2005, Reproduction Print on Archival Paper, 48 x 48 inches



The Travelers All Decked Out
2017, Reproduction Print on Archival Paper, 24 x 24 inches



Biomass
2019, Reproduction Print on Archival Paper, 24 x 24 inches



Center Ridge Trail Birch
2006, Reproduction Print on Archival Paper, 40 x 48 inches



Clarry Hill Sparkle
2023, Reproduction Print on Archival Paper, 24 x 24 inches



Rocky Morning
2017, Reproduction Print on Archival Paper, 24 x 24 inches



From the Stump
2008, Reproduction Print on Archival Paper, 48 x 40 inches



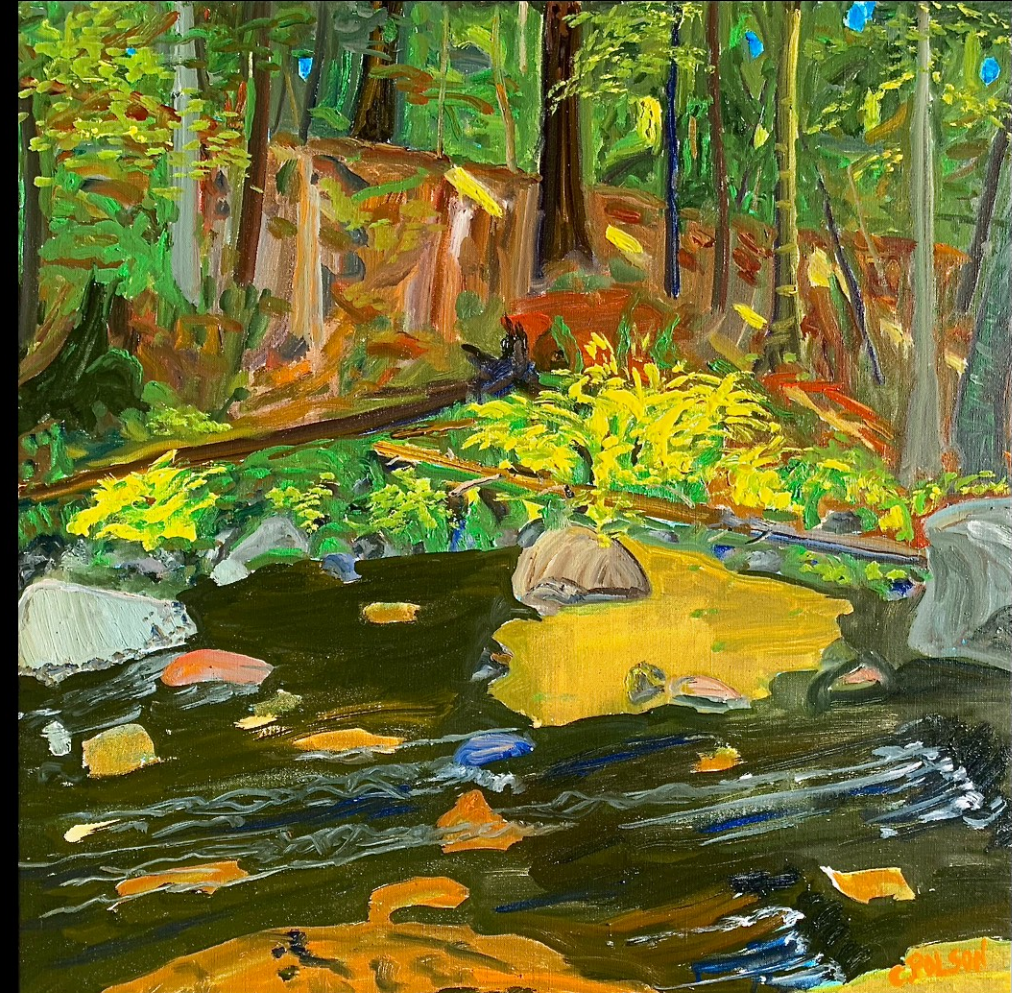
It Begins - Telos
2022, Reproduction Print on Archival Paper, 24 x 24 inches



Fresh Grass
2022, Reproduction Print on Archival Paper, 24 x 24 inches



Ducktrap Gorge #2
2023, Reproduction Print on Archival Paper, 24 x 24 inches



Ducktrap Colors
2023, Reproduction Print on Archival Paper, 24 x 24 inches





Above (detail)
Chris Polson, Rocky Morning

Front Cover (detail)
Chris Polson, Fresh Grass

Back Cover (detail)
Chris Polson, The Travelers All Decked Out

Aperto Fine Art
63 Main Street
Bridgton, Maine 04009
www.apertofineart.com
thegallery@apertofineart.com
(207) 291-4245

© 2024 Aperto Fine Art, LLC.
All Rights Reserved.



APERTO FINE ART